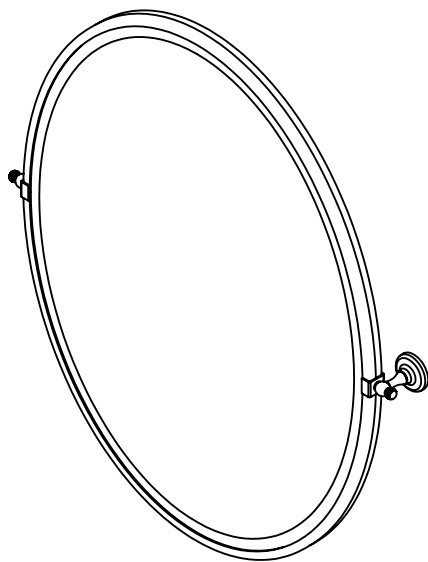


IMPERIAL

General Installation Instructions for Metal Framed Mirrors



Important Information:

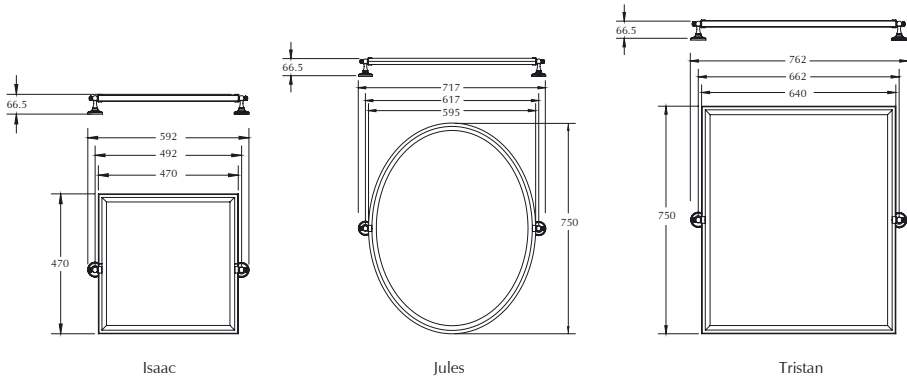
Please check the products for transport damage and that contents are complete before installation.


Consult a qualified plumber if you have any problems installing this product.

Complaints made following installation regarding the above cannot be accepted.

Installation Guide Introduction

Thank you for purchasing this imperial product. These instructions relate to the following products.



 Before you start: Check you have the necessary tools for the installation. It is advisable to prepare a clear area to assemble the products. Lay a soft blanket or sheet to protect the metal finish from scratches.

Tools Required



Hand Held Drill



Safety Goggles



Spirit Level



Tape Measure



Pencil

Assembly Instructions

1. Remove mirror from packaging and inspect for any signs of damage.
2. Using the technical information for your mirror carefully mark the centre points for each fixing ensuring that they are level.



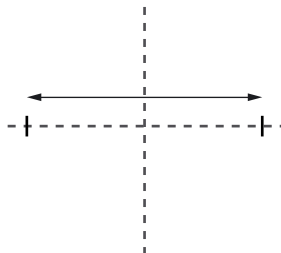
Spirit Level



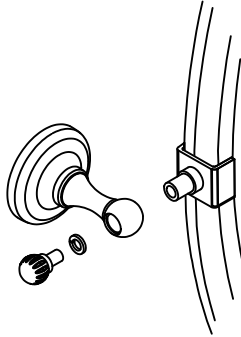
Tape Measure



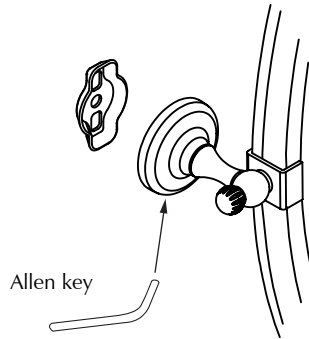
Pencil



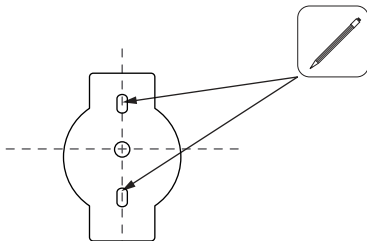
3. Assemble bracket onto the metal mirror frame



4. Loosen grub screw and remove fixing plate



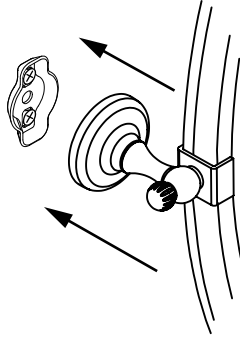
5. Using a pencil carefully mark the points to be drilled



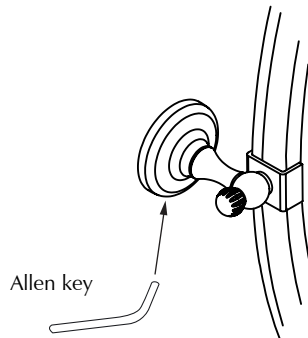
⚠ CAUTION: Before carrying out the following steps ensure there is no hidden pipework or cables in the area that you intend to drill. Always ensure that you take the necessary safety precautions.

⚠ NOTE: It may be wise at this stage to double check that the holes and markings for fixing are correct.

6. Using an appropriate bit, drill holes and insert wall plugs. Secure fixing plates to the wall and locate mirror onto them. Do not release the mirror until secured.



7. Tighten grub screw and carefully release mirror



✓ 8. Your product is now installed and ready for use.

Care & Cleaning

Plated finish should be cleaned with a damp cloth only and dried with a soft cloth. Under no circumstances should bleach or any other abrasive product be used on plated surfaces.

Avoid overspray of glass cleaning products as overtime this can damage the plated surface of your mirror frame.