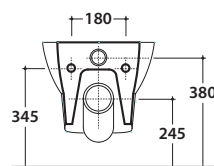
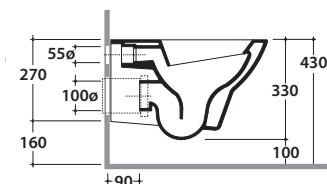
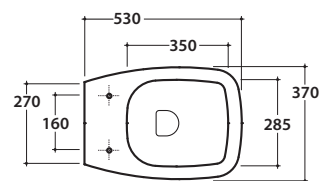


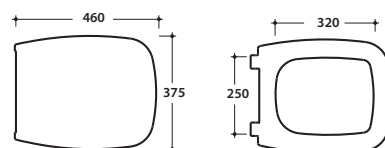
DAILY VASO DAS02.BI

GLOBO



Cod. **DAS02.BI**

Vaso sospeso con sistema di fissaggio dal basso nascosto. Scarico 4,5 / 3 Lt.
Completo di fissaggi. Peso 21 Kg
*Wall-hung WC provided with lower hidden fixing system. Drain 4,5 / 3 Lt.
Fixing kit included. Weight 21 Kg*



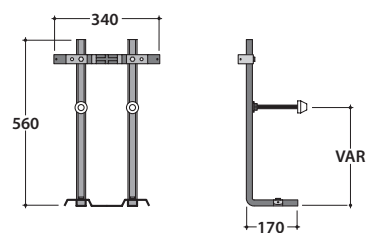
Cod. **DAQ19.BI**

Coprivaso rimovibile in duroplast con chiusura tradizionale. Peso 3 Kg
Removable duroplast seat-cover with traditional closing system. Weight 3 Kg



Cod. **DAQ20.BI**

Coprivaso rimovibile in duroplast con chiusura rallentata. Peso 3 Kg
Removable duroplast seat-cover with soft-closing system. Weight 3 Kg



Cod. **F1002.BI**

Staffa di fissaggio a "L".
Fixing brackets for W/H sanitary.



Cod. **PU001.BI**

Protezione antiurto e acustica.
Acoustic and crash protection.



Cod. **VA132.BI**

Riduttore flusso di scarico.
Flow reductor.