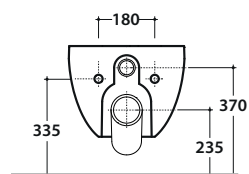
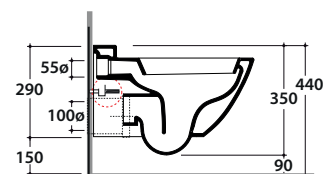
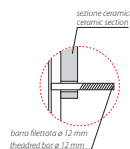
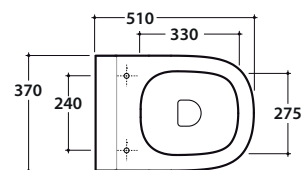


# STOCKHOLM VASO SOSPESO LAS03.BI

# GLOBO

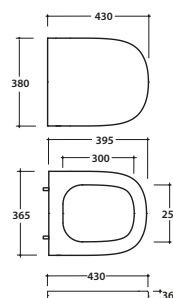


## Cod. **LAS03.BI**

Vaso sospeso 51.37 h35 cm. Scarico 4,5 / 3 Lt. Completo di fissaggi. Peso 20 Kg  
Wall-hung Wc 51.37 h35 cm. Drain 4,5 / 3 Lt. Fixing kit included. Weight 20 Kg

## Cod. **LA019BI**

Coprivaso in termoindurente rimovibile. Peso 3 kg.  
Thermo-setting seat-cover removable. Weight 3 kg.



## Cod. **LA020BI**

Coprivaso in termoindurente chiusura rallentata rimovibile. Peso 3 kg.  
Thermo-setting seat-cover with soft-closing system removable. Weight 3 kg.



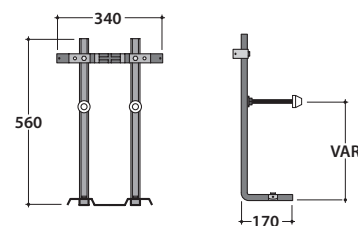
## Cod. **VA132**

Riduttore flusso di scarico.  
Flow reductor.



## Cod. **FI002**

Staffa di fissaggio a "L". (Barra filettata ø12). Peso 2,5 kg.  
Fixing brackets for W/H sanitary. Threaded bar ø 12. Weight 2,5 kg.



## Cod. **PU001**

Protezione antiurto e acustica. Peso 0,2 kg.  
Acoustic and crash protection. Weight 0,2 kg.