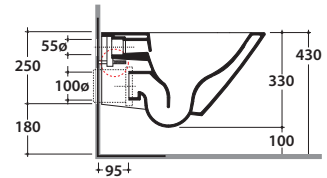
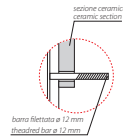
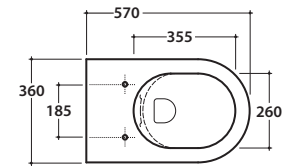


FORTY3 VASO SOSPESO SENZABRIDA®

FOS05.BI

CE EN 997:2015

GLOBO



Effetto antibatterico su ceramica BATAFORM®
Ceramic antibacterial effect BATAFORM®



Bagno di Colore



SENZABRIDA®



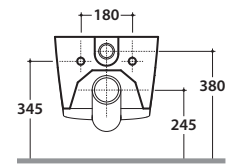
Prodotto smaltato con CERASLIDE®
Glazed product with CERASLIDE®



Scarico ottimizzato a 4,5/3 litri
Drain 4,5/3 Lt.

Cod. **FOS05.BI**

Vaso sospeso SENZABRIDA® 57.36 h 33 cm. Scarico 4,5 / 3 Lt. Completo di fissaggi. Peso 19 Kg
Wall-hung Wc No rim 57.36 h 33 cm. Drain 4,5/3 Lt. Fixing kit included. Weight 19 Kg



Copriwater con sistema di cerniere a sgancio rapido
Seat-cover with hinge system to quick release



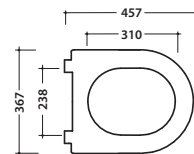
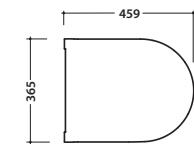
Trattamento antibatterico per sedili in versione bianco lucido
Antibacterial treatment on toilet seats in shiny white

Cod. **FOR19BI**

Coprivaso rimovibile in duroplast con chiusura tradizionale. Peso 3,5 Kg
Removable duroplast seat-cover with traditional closing system. Weight 3,5 Kg

Cod. **FOR20BI**

Coprivaso rimovibile in duroplast con chiusura rallentata. Peso 3,5 Kg
Removable duroplast seat-cover with soft-closing system. Weight 3,5 Kg



Cod. **VA132**

Riduttore flusso di scarico.
Flow reductor.



Cod. **PU001**

Protezione antiurto e acustica.
Acoustic and crash protection.



Cod. **FI002**

Staffa di fissaggio a "L". Peso 2,5 Kg
Fixing brackets for W/H sanitary. Weight 2,5 Kg

water label		
Average flushing volume (litres)		
Max. 3.5		3,38
Max. 4.5		
Max. 5.5		
Max. 6		
> 6		

www.europeanwaterlabel.eu